



My Pet's Brace – Pennsylvania  
Phone: 610-286-0018  
Email: info@mypetsbrace.com

My Pet's Brace – Tennessee  
Phone: 865-213-7172  
Email: bill.kitchens@mypetsbrace.com

# Hock Brace

## Fit and Care Instructions

Thank you for helping your dog/patient walk comfortably again by choosing a custom leg brace from My Pet's Brace! Please follow the instructions below and contact us if you have any questions or concerns regarding the dog's brace or progress.

**Step 1:** Make an appointment with your local veterinarian or rehabilitation professional to assist with the fitting of the brace.

**Step 2:** Watch the fitting video on our website at: [www.mypetsbrace.com/training-videos](http://www.mypetsbrace.com/training-videos).

**Step 3:** Read and follow the Fit and Care Instructions below.

### Wearing Instructions

- Unless otherwise instructed, use a gradual break-in schedule to allow the dog to become familiar with the brace. Start with 2 hours on the first day and increase by an additional 1 hour per day as tolerated. These do not have to be continuous hours and can be broken up into small segments. The dog should be supervised during the break-in period.
  - a. The break-in schedule allows the dog to adjust to wearing the brace, builds their skin tolerance to the brace and allows the pet family to practice putting the brace on and taking the brace off.
  - b. **Liberal powder the inside of the brace with cornstarch or baby powder DAILY.**
- After the break-in period, wearing times should build up to 8-14 hours a day. Put the brace on in the morning and take it off at night.
- The dog should not wear the brace at night or when they are crated, unless specifically instructed to do so by the veterinarian or rehabilitation professional.

### Activity Level / Restrictions

- Walks are permitted based on the veterinarian's/rehabilitation professional's recommendation.
- Gradually increase walks as tolerated.
- The brace can be worn while swimming. Apply a sock over the brace to cut down on drag. After the dog is done swimming- take the brace off, rinse the brace off with fresh water if in salt water, thoroughly dry the brace and the dog's leg, re-powder the brace and then put the brace back on.

### Cleaning the Brace

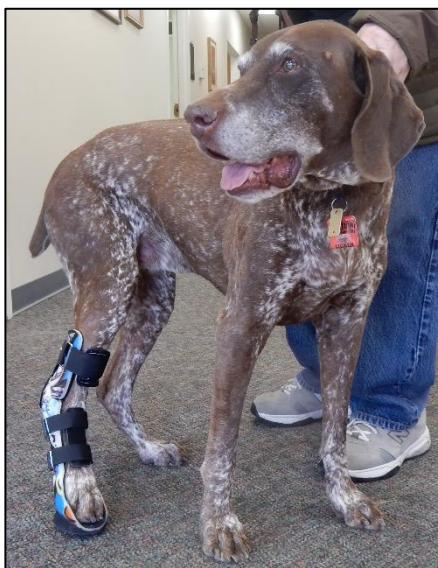
- The brace can be cleaned with a wash cloth and mild soapy water. Make certain all soap residue is removed and the brace and the dog's hair is completely dry before re-applying.
- Remove hair/dirt from the Velcro with a wire brush, brushing in one direction on the hook portion only.

## Fitting the Brace

- 1) The dog can be standing or lying during the fitting. Initially, lying down may be easier.
- 2) **Liberal powder the inside of the brace with cornstarch or baby powder *DAILY*.**
- 3) Position the dog's leg in the brace with the paw sitting flat in the brace. The limb should be all the way back into the brace.
- 4) Tighten the bottom strap first. The bottom strap should be fairly tight, but not too tight as to cut off circulation to the limb.
- 5) Tighten the middle strap.
- 6) Tighten the top strap. The top strap does not need to be overly tight. You should be able to fit your pinky finger between the strap and the edge of the brace (less than a pinky finger for small dogs).
- 7) Check the fit of the brace:
  - a. No part of the brace should rub on the bones of the leg.
  - b. The heel should be all the way back into the brace and the paw should cover the paw pad of the brace.
  - c. Make sure the dog's paw does not extend over the edge of the paw pad of the brace. It is normal for the dog's nails to extend slightly over the paw pad of the brace. If the paw pad is longer than ½" past the nails, the brace may need to be returned to My Pet's Brace to be trimmed. The length of the paw pad can vary depending on how the cast was taken.
  - d. If there is excessive movement of the limb in the brace when the dog walks, tighten the straps of the brace. If that doesn't prevent the unwanted movement, the brace may need to be returned to My Pet's Brace for adjustments.
- 8) The brace is now on. Encourage the dog to walk slowly. Initially, it is common for the dog to not put full weight on their braced leg. As with any brace, it will take a period of time for the dog to get used to wearing and walking with the device. Every dog's adjustment time is different.
- 9) Remove the brace and inspect the dog's skin for any irritation. There may be some skin redness where the brace is in contact with the dog's leg since the goal of the brace is to control and restrict certain motions. Redness should dissipate within 15 minutes. Discontinue use of the brace if there are any signs of significant hair loss, blisters, sores or bleeding and contact My Pet's Brace.
- 10) Inspect the brace for signs of wear. Straps and padding may need to be replaced over time. This is normal wear on the brace. For replacements or repairs, call 610-286-0018 if you were mailed the brace or worked with the Pennsylvania My Pet's Brace office. Call 865-213-7172 if you worked with the Tennessee Office.

## Removing the Brace

- 1) Unhook the Velcro of the bottom strap, middle strap and top strap.



## Adjustments and Modifications

During the fitting process, adjustments are often needed to obtain the most exacting fit. Sometimes, these do not become obvious until the brace has been worn for several weeks. If adjustments are needed, please contact us to discuss. Call 610-286-0018 if you were mailed the brace or worked with the Pennsylvania My Pet's Brace office. Call 865-213-7172 if you worked with the Tennessee Office. We will most likely request a picture or a video of the dog walking (taken at dog's eye level) be emailed for us to evaluate. Modification costs and replacement parts are covered under our warranty during the first 90 days after original delivery of the brace.